



Society for Community Organization (SoCO)
Transitional Housing Project:
Everest Residence in Chai Wan
(Project Code: 18)

About Everest Residence

Main Transportation

- Chai Wan MTR Station
- Bus Stops @ Wing Tai Road

Facilities

- Near to Yue Wan Estate, Tsui Wan Estate
- Near to wet markets, schools, and park

Map

- | | |
|-----------------------|------------|
| Everest Residence | School |
| Sport Centre/Park | Hospital |
| Bus / Minibus Stops | Wet Market |
| Shopping malls/retail | |





Society for Community Organization (SoCO)
Transitional Housing Project:
Everest Residence in Chai Wan
(Project Code: 18)



NOTES:

© COPYRIGHT OF THIS DRAWING IS RETAINED BY NELSON CHEN ARCHITECTS LTD. NO PORTION MAY BE REPRODUCED WITHOUT WRITTEN CONSENT OF THE ARCHITECT.

- 1** PIPE DUCT LEFTOVER SPACE
- 2** VE - DRYING RACK REDUCED LENGTH
- 3** VE - SLIDING WINDOWS REPLACED BY CASEMENT AND AWNING WINDOWS
- 4** PROVISIONAL - BEDROOM DOOR

DRAFT

PROJECT:



SOCIETY FOR COMMUNITY ORGANIZATION
 TRANSITIONAL COMMUNITY HOUSING SCHEME
 SHEUNG ON STREET, CHAI WAN, HONG KONG

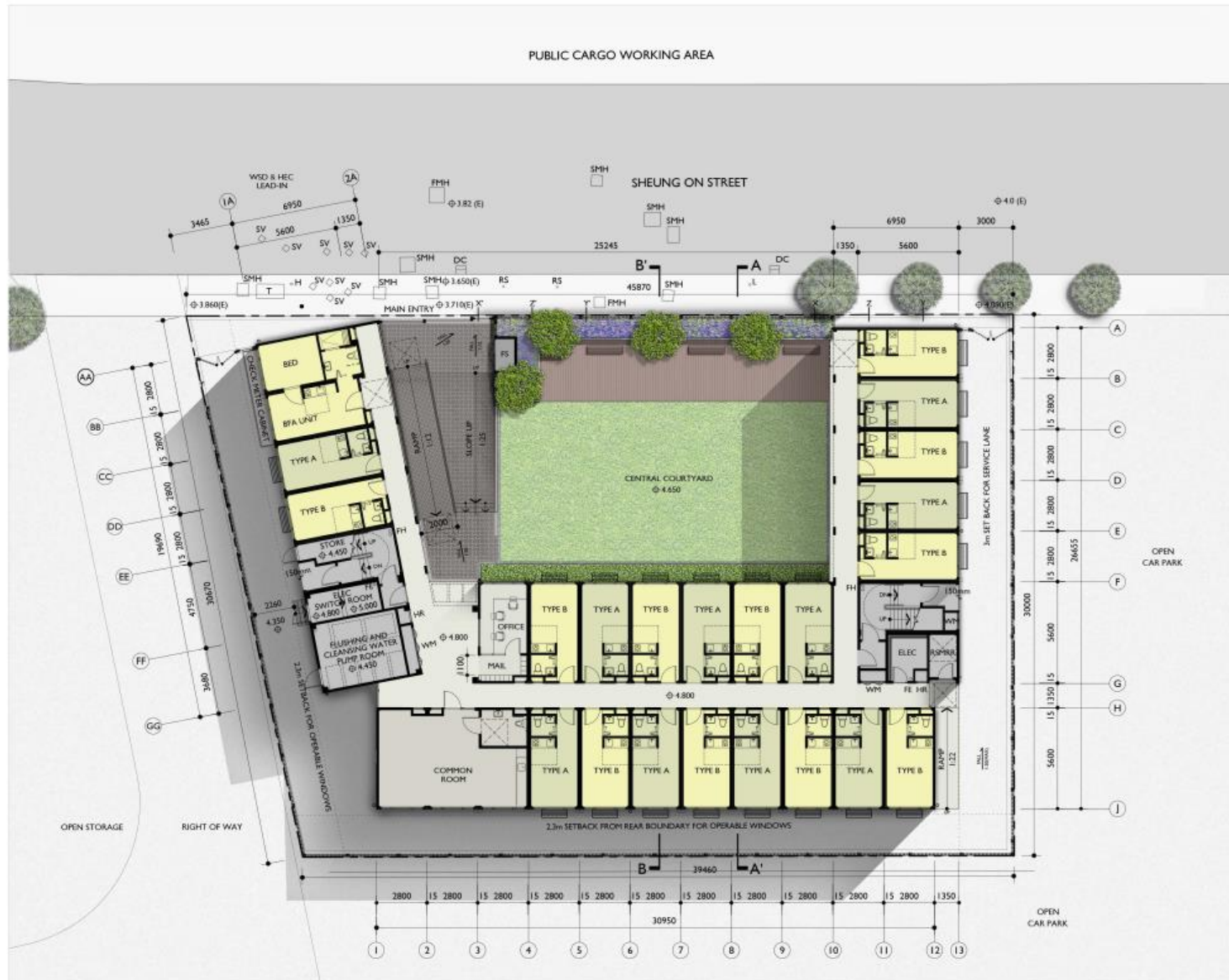
DWG TITLE: TYPICAL UNITS & BFA PLANS
 DWG NO.: A-14

SCALE: 1:50
 DATE: 08/02/2023
 REV: A

ARCHITECT:

Nelson Chen Architects Ltd
 陳炳麟建築師有限公司

Society for Community Organization (SoCO)
Transitional Housing Project:
Everest Residence in Chai Wan
(Project Code: 18)



NOTES:
 © COPYRIGHT OF THIS DRAWING IS RETAINED BY NELSON CHEN ARCHITECTS LTD. NO PORTION MAY BE REPRODUCED WITHOUT WRITTEN CONSENT OF THE ARCHITECT.
 DEVELOPMENT SITE AREA = 1,280 sq.m.
 TOTAL ROOFED-OVER AREA = 621 sq.m.
 TOTAL OPEN SPACE = 334 sq.m. (> 310 sq.m. min.)
 GFA = 600 sq.m. x 4 FLRS = 2,448 sq.m. ABOUT

TOTAL = 103 UNITS
 G/F = 22 UNITS (INCLUDING 1 BFA)
 1/F, 2/F, 3/F = 27 UNITS

- LEGEND:**
- EXISTING TREE
 - PROPOSED TREE
 - STREET HYDRANT
 - DRAINAGE CHANNEL
 - STOP VALVE
 - FOUL MANHOLE
 - SEWAGE MANHOLE
 - ROAD SIGN
 - LIGHT POST
 - STRUCTURAL FLOOR LEVEL
 - FINISH FLOOR LEVEL
 - EXISTING GROUND LEVEL

DRAFT

PROJECT:

SOCIETY FOR COMMUNITY ORGANIZATION
 TRANSITIONAL SOCIAL HOUSING PROJECT
 SHEUNG ON STREET, CHAI WAN, HONG KONG

DWG TITLE: GROUND FLOOR PLAN DWG NO: A-03

SCALE: 1:200 DATE: 08/05/2023 REV: N

ARCHITECT: Nelson Chen Architects Ltd
 陳國輝建築師有限公司